

# THE INTERIOR PLACE

# 05



Having been established in 1999, The Interior Place is a veteran in the interior design industry. Over its 13-year history, it has grown, not just in size, but also in terms of the calibre of its work. A hands-on approach has ensured that quality is maintained regardless of the project – residential or commercial. Today, it is a boutique design firm with a wide-ranging portfolio, many of which see the firm playing the role of a design consultant. Always looking forward, the firm continues to progress, with a keen focus on landed property residential projects, as well as overseas work. If its track record is any indication, the future looks to be a promising one for the firm.

FROM LEFT:  
WAYNE NG  
MANAGING DIRECTOR  
CANDY NG  
CREATIVE DIRECTOR

CREDITS: Bianco Marble Uassiq (DX04316G)  
laminare, from Lamitak; Lime (SCXG138D)  
laminare, from Lamitak.

IN ORDER FOR A PROJECT TO BE DONE WELL, THE DESIGNERS NEED TO REALLY GET INVOLVED – VISITING THE SITE FREQUENTLY, MAKING SURE THAT THINGS ARE GOING EXACTLY AS PLANNED.

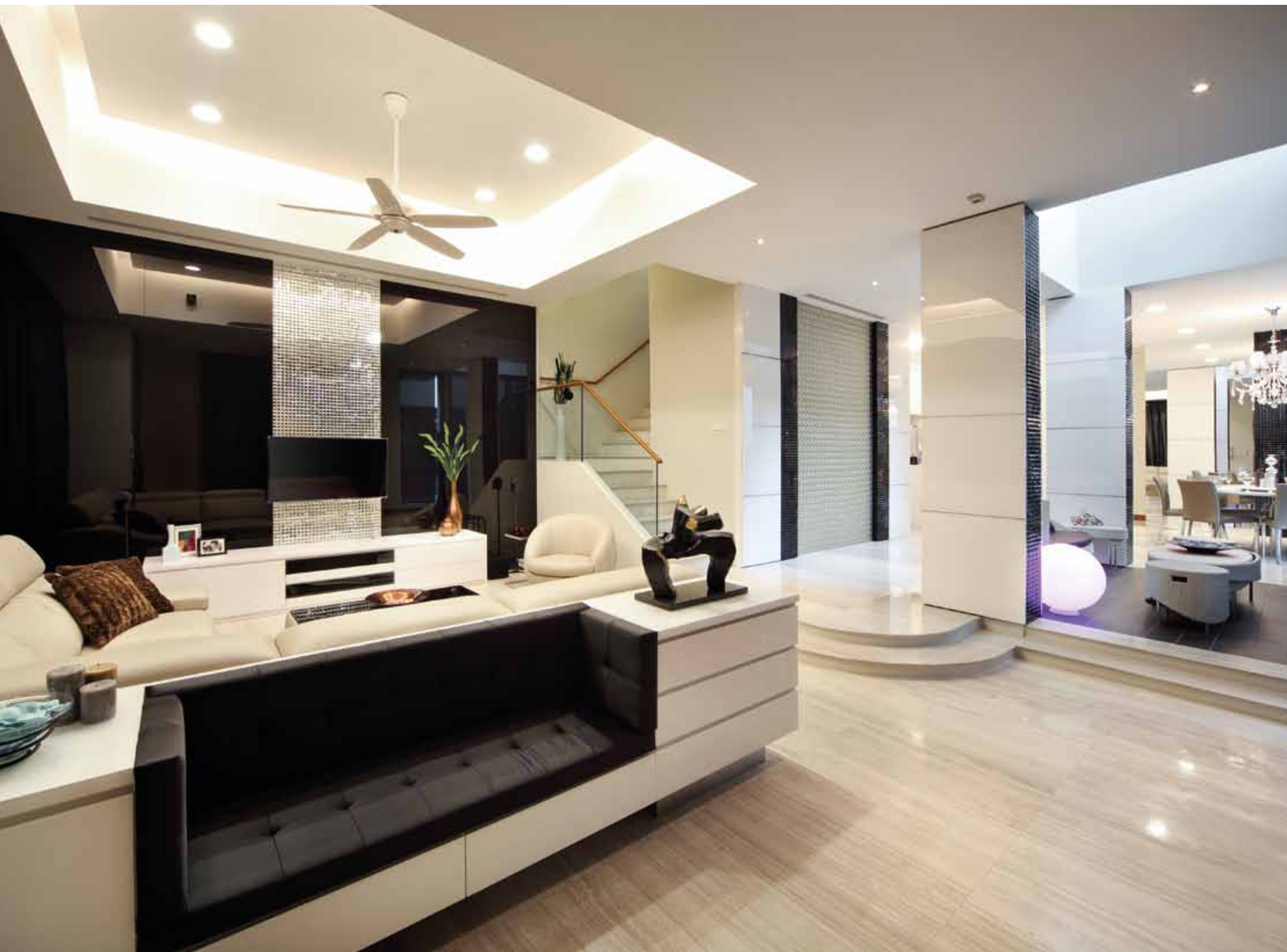


STYLE FILE 1

DETAILS 4-room Maisonette  
FLOOR AREA 2,600 SQFT







# LIVING LARGE

THE INTERIOR PLACE DESIGNS A HOME THAT OFFERS ITS OWNERS COMFORT, PLEASURE AND DELIGHT.

**W**hen a home is as large as this 3,500-sqft semi-detached home, the opportunity for creating a truly livable and enjoyable abode is great. Commissioned interior design firm The Interior Place decided to give the home for a family of four a contemporary look with special attention paid to high quality finishes and unique accents scattered throughout.

#### THE LITTLE THINGS

Designer Candy Ng points out that a concerted effort was made towards creating accents with a difference. On the first floor, for example, mosaic tiles were used to decorate columns and even the TV feature wall in the living area. "Mosaic tiles are usually used in functional spaces like bathrooms, but we thought it would be interesting to use it as a highlight in the main living spaces," says Candy. In addition, large, seamless sheets of laminating were sourced to create clean, uninterrupted surfaces at the aforementioned TV feature wall. "Little details like this may not be immediately obvious but they make a big difference in the larger scheme of things," Candy adds.

#### LET IT SLIDE

A clever detail that The Interior Place included is a sliding mirror panel right beside the dining area. When slid open, a







SWAROVSKI-MATCHED  
LED LIGHTS DOT THE  
CEILING FOR A STARRY-  
NIGHT-SKY EFFECT.

passageway to the wet kitchen, maid's room and guest room is revealed. When closed, guests are none the wiser.

The ideas for partitions and sliding compartments does not stop here. In the guest room, a customised partition with a filigree-like cut-out is a welcome detail in the space. On the second floor where the family den is, Candy introduced a double layer bookcase system where a first layer of shelves can easily slide across a hidden second layer. "The owners are big readers, so this comes in very handy when it comes to storing their collection of books," Candy says, pointing out at the same time that it was no easy task customising the bookcases.

#### INTERIOR TREATS

In addition to practicalities, indulgences also find their place in the home. In the owners' two daughters' rooms, Swarovski-matched LED lights dot the ceiling for a starry-

night-sky effect. Also for the daughters who are trained in both ballet and piano playing, a dance-studio-cum-music room was created on the attic level. Coloured in a cool blue lighting and equipped with necessary equipment, including sound-proofing and ample mirrored surfaces, the space is ideal for nurturing the girls' interests – as a home should rightly do. ■



THE INTERIOR PLACE PTE LTD

450 MacPherson Road Singapore 368170  
T (65) 6292 9882 F (65) 6292 9883 E sales@theinteriorplace.com.sg  
www.theinteriorplace.com.sg

TIP  
a place for ideas